

Update 2017

Tuesday, October 24, 2017

NYC | New York Society of Security Analysts |  Webcast

Monday, November 13, 2017

Albany | New York State Bar Association

NYSBACLE



INCLUDES
1.5 Ethics

Offering Coverage of Six Key Areas of Practice:

- Business and Corporate Law
- Criminal Law
- Ethics and Professionalism
- Matrimonial and Family Law
- New York Civil Practice
- Trusts and Estates Law

**Special NYSBA
Member Rate \$175**

www.nysba.org/Update2017



*Sponsored by the Family Law Section, the General Practice Section,
the Trusts and Estates Law Section and the Committee on
Continuing Legal Education of the New York State Bar Association*

PROGRAM DESCRIPTION

NYSBA CLE is pleased to present Update 2017, covering the most recent developments in areas of practice that New York attorneys regularly handle, including: Civil Procedure; Matrimonial and Family Law; Trusts and Estates Law; Business and Corporate Law; Criminal Law; and Ethics and Professionalism.

All that is new in each field – cases, statutes, rules, procedures and practice techniques – will be reviewed by an experienced faculty member. Don't miss this all-inclusive program providing a comprehensive overview of the important changes that occurred during 2017!

WHO SHOULD ATTEND

Attorneys engaged in General Practice covering Criminal, Matrimonial and Family, Business/Corporate, Trusts and Estates and Litigation



Join the Conversation!

Follow **@NYSBACLE** and **@NYSBALPM** on Twitter!

REGISTRATION

Online: www.nysba.org/Update2017

Phone: 1-800-582-2452

PRICING

NYSBA Members: \$175

Non-Members: \$275

7.5 TOTAL CREDITS: 6.0 Professional Practice; 1.5 ethics

This course has been approved for MCLE credit in New York for all attorneys, including newly admitted (less than 24 months).

This program has also been approved for MCLE credit by the **State Bar of California** and the **Pennsylvania Continuing Legal Education Board** for 5.0 credit hours of substantive law and 1.0 credit hour of ethics. All inquiries regarding MCLE credits may be directed to (518) 487-5606.

This program has been approved by the **Board on Continuing Legal Education of the Supreme Court of New Jersey** for 7.5 hours of total CLE credit. Of these, 1.5 qualify as hours of credit for ethics/professionalism, and 0.0 qualify as hours of credit toward certification in civil trial law, criminal trial law, workers compensation law and/or matrimonial law. This course does not qualify under any of the nine specified new admit areas, in five of which New Jersey attorneys admitted in 2009 or thereafter, in their first full two-year compliance period, must take 15 of their 24 required credit hours (see BCLE Reg. 201:2).

This course includes no credit hours for the Continuing Professional Education (CPE) requirements of New York and New Jersey CPAs. Sponsor Numbers: New York: 000026; New Jersey: 20CE00099900.

The New York State Bar Association's Committee on Continuing Legal Education has been certified by the New York State Continuing Legal Education Board as an accredited provider of continuing legal education in the State of New York.

IMPORTANT NOTICE: PARTIAL CREDIT FOR PROGRAM SEGMENTS NOT ALLOWED. Under the New York State Continuing Legal Education Board Regulations and Guidelines, attendees at CLE programs cannot receive MCLE credit for a program segment unless they are present for the entire segment. Persons who arrive late, depart early, or are absent for any portion of the segment will not receive credit for that segment.

AGENDA

- 8:30 a.m. **Registration**
- 9:00 a.m. **Welcome and Introductions**
- 9:05 a.m. **Matrimonial and Family Law**
Bruce J. Wagner, Esq.
(1.0 MCLE credit in Professional Practice)
- 9:55 a.m. **Trusts and Estates Law**
Marion Hancock Fish, Esq. (Albany Session)
Martin R. Goodman, Esq. (NYC Session)
(1.0 MCLE credit in Professional Practice)
- 10:45 a.m. **Refreshment Break**
- 11:00 a.m. **Business and Corporate Law**
Gerald F. Stack, Esq.
(1.0 MCLE credit in Professional Practice)
- 11:50 a.m. **Lunch (on your own)**
- 1:00 p.m. **Criminal Law**
Erica T. Dubno, Esq.
(1.0 MCLE credit in Professional Practice)
- 1:50 p.m. **New York Civil Practice – Part 1**
John R. Higgitt, Esq.
(1.0 MCLE credit in Professional Practice)
- 2:40 p.m. **Refreshment Break**
- 2:55 p.m. **New York Civil Practice – Part 2**
John R. Higgitt, Esq.
(1.0 MCLE credit in Professional Practice)
- 3:45 p.m. **Ethics and Professionalism**
Deborah A. Scalise, Esq.
(1.5 MCLE credits in Ethics)
- 5:00 p.m. **Adjournment**

Register Today | www.nysba.org/Update2017

PROGRAM LOCATIONS

Tuesday, October 24, 2017 | NYC

New York Society of Security Analysts

1540 Broadway, Suite 1010 | New York, NY 10036

Live Program & Webcast | www.nysba.org/Update2017NYC

Monday, November 13, 2017 | Albany

New York State Bar Association

1 Elk Street | Albany, NY 12207

Live Program | www.nysba.org/Update2017Albany

PROGRAM FACULTY



Erica T. Dubno, Esq.

Partner
Fahringer & Dubno
New York, NY



Deborah A. Scalise, Esq.

Partner
Scalise & Hamilton LLP
Scarsdale, NY



Martin R. Goodman, Esq.

Partner
Schlesinger Gannon &
Lazetera LLP
New York, NY



Gerald F. Stack, Esq.

Partner
Barclay Damon LLP
Syracuse, NY



Marion Hancock Fish, Esq.

Partner
Hancock Estabrook, LLP
Syracuse, NY



Bruce J. Wagner, Esq.

Shareholder
McNamee Lochner P.C.
Albany, NY



John R. Higgitt, Esq.

Chief Court Attorney
Supreme Court,
Bronx County
Bronx, NY

Special Offer from the NYSBA Bookstore

Save 20% on our featured product

Best Practices in Legal Management

This is the most complete and exhaustive treatment of the subject of the business aspects of running a law firm available anywhere. Approximately 90 law practice management experts were asked to submit what they considered best practices for managing all “back office” functions of a law firm. This comprehensive textbook provides practical tips and best practices as well as useful forms and templates.

PN: 4131 | 2010 | **NYSBA Members \$145** | Non-Members \$190

1.800.582.2452 | www.nysba.org | source code **PUB8484**

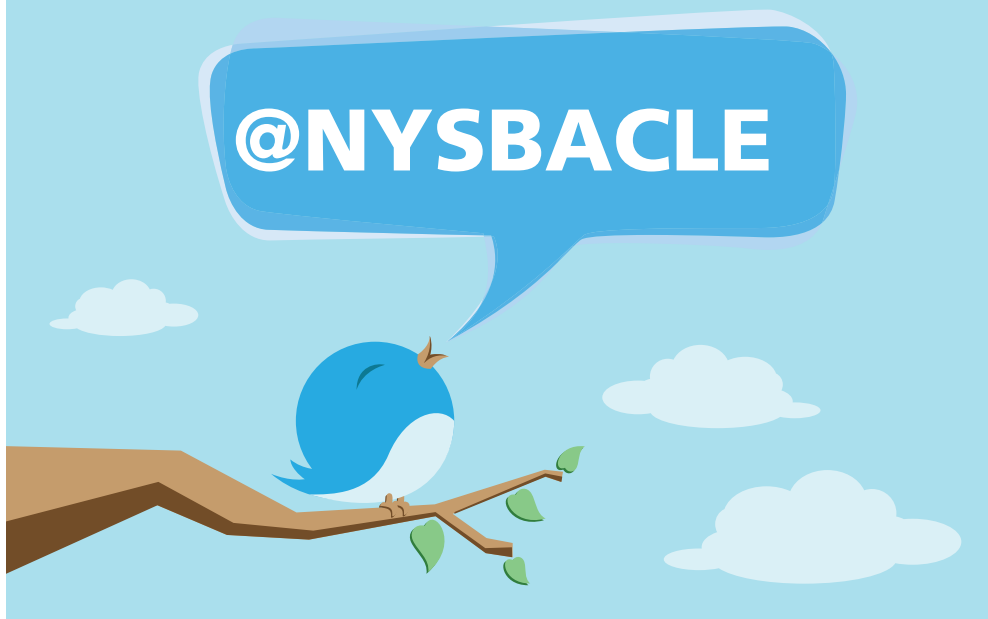
Use coupon code **PUB8484** when you order online and save 20%

Discount does not apply to HotDocs® products



Follow Continuing Legal Education on Twitter for Quick and Relevant Program Information!

@NYSBACLE



Join or Renew Your NYSBA Membership and Save



With NYSBA Membership You Can Do More:

1. Save money with members-only discounts on CLE of more than 30%
2. Stay informed with up-to-date, accurate members-only information and publications
3. Access members-only job and career resources at www.nysba.org/jobs
4. Network with the best via exclusive, members-only Section benefits

Become a NYSBA Member Today! Go to www.nysba.org/join

INFORMATION AND POLICIES

Pre-registration Strongly Advised: You can save money and guarantee your seat and course materials by registering early. Seating is limited in all locations and registrations are taken on a first-come, first-served basis.

Cancellations Are Easy – Full Refunds Are Given: Your full registration fee will be refunded if you give us notice no later than the close of business (4:45 p.m. EST) three business days prior to the date of the program for which you registered. Registrations canceled less than three business days from the program date will be assessed a cancellation fee of \$25.00. To cancel, call or email the Member Resource Center at (800) 582-2452 or mrc@nysba.org. If you do not cancel and do not attend the program, access to a complete set of course materials in PDF format will be forwarded to you via e-mail in consideration of the registration fee. Non-registrants may purchase program materials after the final program date.

MCLE Credit: This program is acceptable for MCLE credit in New York and many other MCLE jurisdictions.

Tuition Assistance: New York attorneys may apply for tuition assistance to attend this program based on financial hardship. Any New York attorney who has a genuine financial hardship may apply for tuition assistance for a CLE program by completing a Tuition Assistance Request Form and returning it to the CLE Department no later than five working days prior to the program, explaining the basis of his/her hardship. If granted, the attorney will receive tuition assistance, depending on the individual's circumstances. For more details, please contact Holly Hirsch at (518) 487-5586.

Recording of NYSBA Seminars in any form is strictly prohibited.



Accommodations for Persons with Disabilities: NYSBA welcomes participation by individuals with disabilities. NYSBA is committed to complying with all applicable laws that prohibit discrimination against individuals on the basis of disability in the full and equal enjoyment of its goods, services, programs, activities, facilities, privileges, advantages, or accommodations. To request auxiliary aids or services or if you have any questions regarding accessibility, please contact Cindy O'Brien at (518) 487-5585 or cobrien@nysba.org.



Non-Profit Org.
U.S. Postage
PAID
Albany, N.Y.
Permit No. 155

NYSBA Law Practice Management

Whether you're a solo practitioner or a managing partner at a national law firm, you'll find law practice management resources to meet your day-to-day practice needs. Checklists, best practices, publications, and continuing legal education programs provide up-to-date information and practical tips to help you better manage your law practice.

Starting a Practice | Managing Your Practice | Protecting Your Practice | Technology and Your Practice
Marketing Your Practice | Escrow Accounts, IOLA, Ethics | Selling Your Practice and Retirement | Planning Ahead

www.nysba.org/LPM

Update 2017

7.5 MCLE Credits

6.0 Professional Practice

1.5 Ethics

October 24 | NYC

NY Society of Security Analysts

November 13 | Albany

NY State Bar Association

\$175 for NYSBA Members

\$275 for Non-Members

www.nysba.org/Update2017

4 WAYS TO REGISTER

- Call** **1.800.582.2452** (U.S. and Canada) or **518.463.3724** in Albany & surrounding area
- Mail** New York State Bar Association, Member Resource Center, One Elk Street, Albany, NY 12207
- Fax** **518.463.5993**
Download an order form online at www.nysba.org/CLEOrderForm
- Online** www.nysba.org/Update2017

Please Note

- Registrations canceled less than three days from the program date will be assessed a \$25.00 cancellation fee.
- Newly admitted attorneys may attend via webcast to receive New York MCLE credit.